

OMEGA  
PEPTIDE  
iP.3

OMEGA  
PEPTIDE  
iP.5

OMEGA  
PEPTIDE  
iP.6

OMEGA  
PEPTIDE  
iP.7

OMEGA  
PEPTIDE  
iP.9



# OMEGA PEPTIDE IPH

— 2019

# Ideal Pharma Peptide

*Innovative European company – developer of the unique IPH peptide complexes for food and cosmetic industries, sports nutrition and dietary supplements. Due to the high quality of raw materials and the efficacy of the final products Ideal Pharma Peptide is a recognized leader in the research and production of peptides.*

## Content

Introduction	03
1. Peptide complexes IPH	05
2. Omega Peptide IPH 3	11
3. Omega Peptide IPH 5	15
4. Omega Peptide IPH 6	19
5. Omega Peptide IPH 7	23
6. Omega Peptide IPH 9	27
7. Conclusion	30

Peptides were discovered more than 100 years ago. During this time many eminent scientists were engaged in their research and each made their invaluable contribution. Ideal Pharma Peptide continued this work. Relying on the existing global experiences peptides studies, as well as the knowledge of a specially created scientific council, the company developed simple and accessible methods of using peptides to improve athletic performance and quality of life.

Ideal Pharma Peptide is engaged in expanding knowledge about peptides, introducing the latest methods of research and production technologies, as well as studying peptides use effectiveness, both separately and joint with other valuable components.

Synthesis, research and production of peptide complexes requires high-tech equipment, fundamental scientific and practical knowledge. To ensure all the necessary conditions for production of high-quality raw materials Ideal Pharma Peptide constantly invests in research and development activities, which gives expected results, such as active development and innovative products.

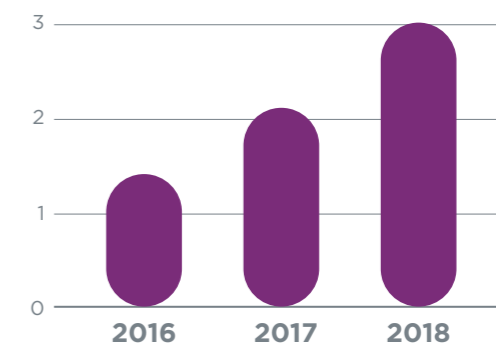
Ideal Pharma Peptide works for the future and is looking for new solutions to improve the performance of various body systems.

Peptide complexes based on active short peptides, developed by Ideal Pharma Peptide, allow you to quickly and efficiently solve such universal problems as improving the quality of life, athletic performance and rejuvenation of the body.

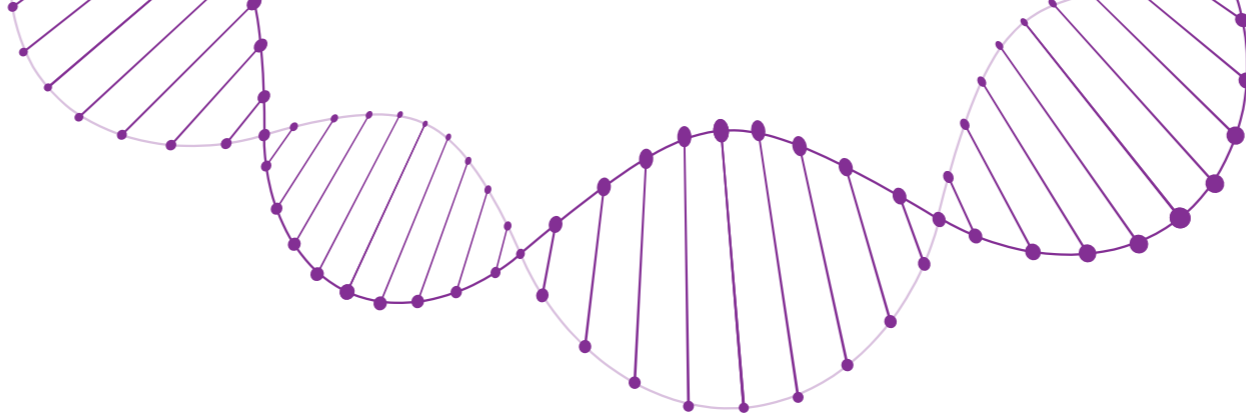
Peptide complexes developed by Ideal Pharma Peptide are a profitable solution for company's partners. Ready-made raw material saves the final product manufacturers from unnecessary financial expenses and loss of time, while the raw material's high quality ensures commercial success.

### Ideal Pharma Peptide – creator of biotechnology of the future!

DYNAMICS OF MANUFACTURING PRODUCTS, CONTAINING PEPTIDES, BN \$

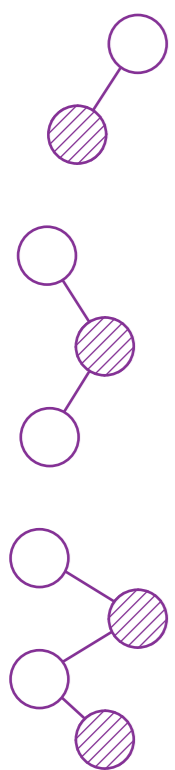


PEPTIDE  
COMPLEXES  
IPH



# Short peptides

*Short peptides – smallest protein molecules formed in the process of metabolism and consisting of amino acid residues. Unlike other larger molecules, they easily penetrate cells and regulate most important processes occurring in the body: cell nutrition and renewal, metabolism, muscle growth, resistance to damaging factors, and many others.*



Due to diseases, over straining, as well as age, shortage of peptides occurs, this leads to weakening and aging of the body. Development of biomolecular engineering and the revolutionary discoveries of scientists allowed not only to determine the role of peptides in the functioning of organs and systems, but also to find ways to compensate their lack.

It is known that peptides differ from each other and each of the peptides have their targeted action. Scientists have been able to develop methods to produce various types of peptides in the laboratory and find ways to apply them in cosmetology, medicine and functional nutrition.

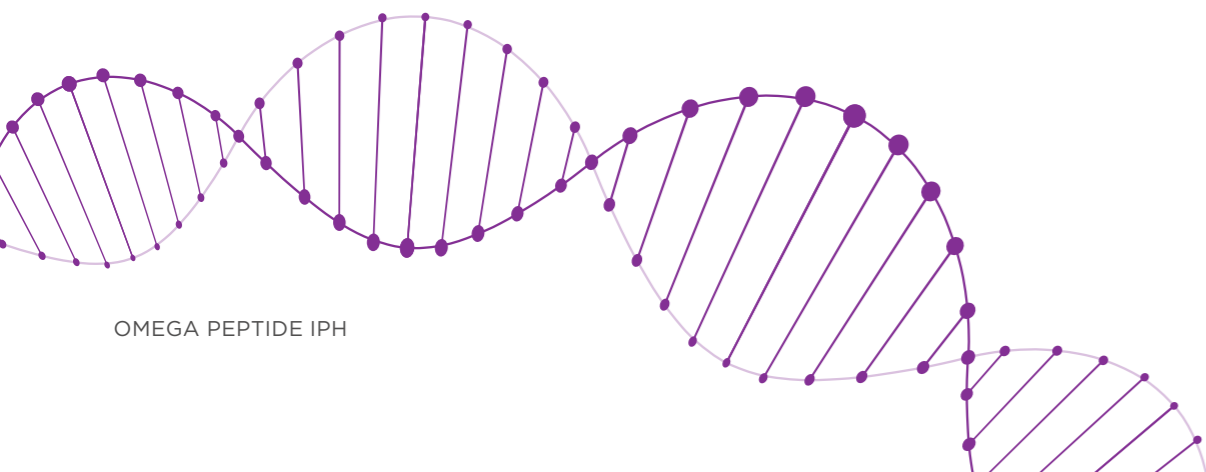
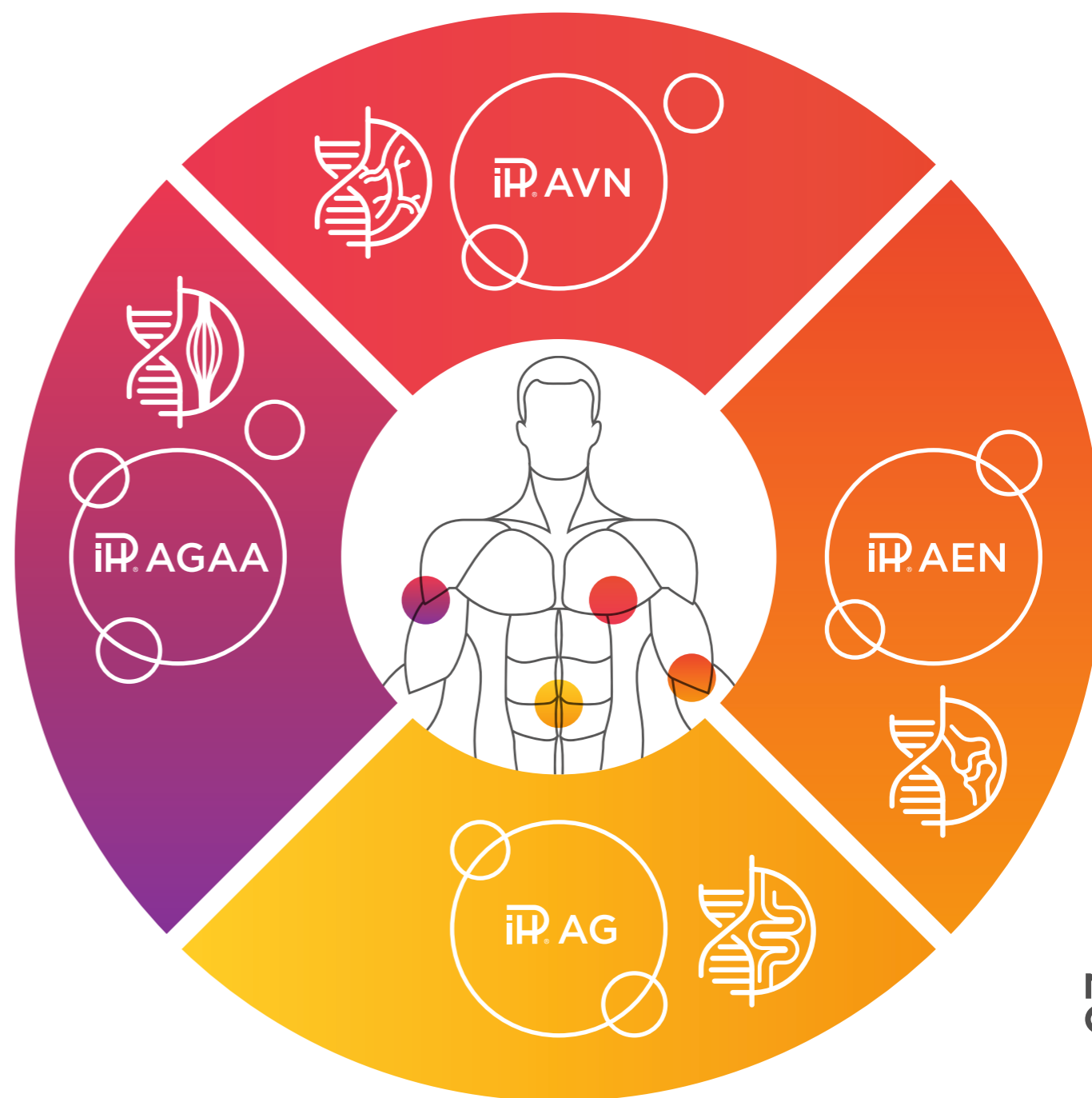
Ideal Pharma Peptide continues to work successfully in the field of research, peptides production and efficacy on the body to solve various issues. Ideal Pharma Peptide company managed to improve methods of synthesizing short peptides and getting raw materials of high quality and targeted action.

### Advantages of short peptides:

- 1 Quickly absorbed by the body
- 2 Do not cause an immune response
- 3 Impact point and therefore more efficiently.

### ZONES OF ACTIVE EXPOSURE OF IPH PEPTIDE COMPLEXES

- muscles;
- vessels;
- joints;
- intestines



# The advantages of IPH complexes



**IPH AGAA** — active peptide complex for muscles. Accelerates metabolism of the muscle tissue cells, increases elasticity of the muscles, promotes an increase in muscle mass and rapid recovery after exertion.



**IPH AVN** — active peptide complex for the vascular system. Strengthens inner walls of blood vessels, makes them more elastic.



**IPH AEN** — active peptide complex for joints. It is responsible for synthesis of the cartilage cells and for the full functioning of the joints. Maintains their health at intense physical exertion, increases strength and endurance of the body.



**IPH AG** — active peptide complex for immunity and intestinal improvement. Increases the functionality of intestinal cells, improves microflora, and strengthens local immunity. It activates the circulatory system, so that the most important elements are better absorbed into the blood.

The company Ideal Pharma Peptide is constantly developing new innovative products — unique complexes in which activity of short peptides is complemented by other valuable substances. One of the latest achievements is the Omega-Peptide Complexes.

The Omega group of fatty acids plays an essential role in the proper functioning and health of the body. However, studies confirm that there is often a shortage of these substances, which requires correction in the diet or intake of food additives.

The advantage of Omega Peptide IPH is that, unlike polyunsaturated fatty acids traditionally derived from fish acids, Ideal Pharma Peptide raw material is manufactured from the plant-derived ingredients. It has no specific odor, has high bioavailability (digestibility) and is in granulate or powder form, which is convenient for production of the final product.

In addition, vegetable components with a high content of omega-acids are used to produce Omega Peptide IPH, making the final product as effective as possible.

**Peptide complexes IPH from Ideal Pharma Peptide are profitable ready-made solutions for businesses, they do not have analogues and are revolutionary on the market of nutraceuticals!**

OMEGA  
PEPTIDE  
iP.3

## OMEGA PEPTIDE IPH 3



1. INNOVATIVE COMPLEX IS BASED ON ACTIVE PEPTIDE IPH AEN, ENRICHED WITH POLYUNSATURATED FATTY ACIDS OMEGA-3.
2. AMONG THE VEGETABLE COMPONENTS LINSEED OIL, FROM WHICH THE COMPONENT IS RECEIVED, HAS THE LARGEST CONTENT OF ACIDS OF THIS GROUP.
3. THE GENERAL EFFECT OF THESE SUBSTANCES IS THE IDEAL SOLUTION TO IMPROVE THE WORK OF MUSCULOSKELETAL SYSTEM.
4. THE COMPLEX PROVIDES A DIRECTED STRENGTHENING ACTION ON CONNECTIVE TISSUE ELEMENTS: CARTILAGES, TENDONS AND LIGAMENTS.

# Omega Peptide IPH 3

## ACTIVE SUBSTANCES



### 1. PEPTIDE IPH AEN

Due to the target action of short peptide IPH AEN an increase in the synthesis and renewal of cartilage cells occurs, which accelerates the process of an osteogenesis. It helps to support the functionality of the musculoskeletal system, in particular the joints, prevents and slows down inflammatory and degenerative processes.

Peptide IPH AEN can rightly be called a powerful bioregulator for the musculoskeletal system.

In addition, it is quickly absorbed and enhances the effects of Omega-3.

### 2. POLYUNSATURATED FATTY ACIDS OMEGA-3

The most important Omega-3 acids are alpha-linolenic, eicosapentaenoic and docosahexaenoic acids. They are not synthesized in the human body and are irreplaceable substances that must be regularly obtained in sufficient quantities from food.

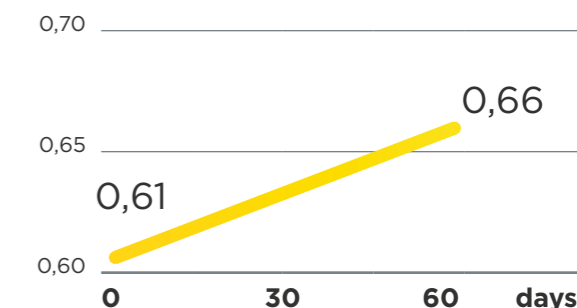
Omega-3 acids actively participate in cells building and tissue regeneration, have anti-inflammatory effects, help to restore joint function, improve skin quality. In combination with peptide IPH AEN even more increase its effect on cartilages and a bone tissue.

## EFFECTS AND RESULTS

- elasticity of tendons and ligaments;
- reduction of inflammatory reactions in joints;
- recovery of motions amplitude;
- strengthen the musculoskeletal system

## INFLUENCE OF IPH AEN PEPTIDE COMPLEX ON THE INDEX OF THE DEGENERATIVE THINNING OF THE CARTILAGE

### cartilaginous tissue



## APPLICATION

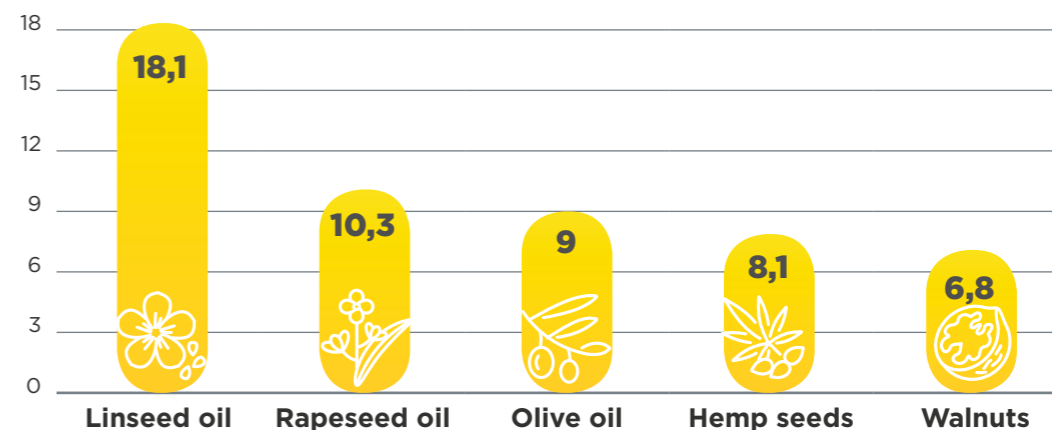
This complex is effective both for prevention of diseases of the musculoskeletal system, and as an additional means to the prescribed treatment regimen.

It has the ability to positively affect the work of many body systems and allows to maintain activity for everyone who cares for their health.

### MAJOR FACTORS TO INTAKE THIS COMPLEX:

- intense physical and sports strains;
- sedentary lifestyle;
- obesity;
- age-related changes in the structure of the musculoskeletal system.

## CONTENT OF OMEGA-3 IN VEGETABLE PRODUCTS IN G (BY 100 G):



OMEGA  
PEPTIDE  
**IPH 5**



## OMEGA PEPTIDE **IPH 5**

1. MAIN COMPONENT OF THE UNIQUE COMPLEX – ACTIVE PEPTIDE IPH AG – WORKS IN PAIR WITH POLYUNSATURATED FATTY ACIDS OMEGA-5, OBTAINED FROM HIGH-QUALITY POMEGRANATE GRAINS OIL.
2. THIS IS A HIGHLY SAFE NUTRITIONAL SUPPLEMENT WHICH WILL HELP TO NORMALIZE DIGESTION PROCESSES, ACCELERATE DIGESTION OF USEFUL SUBSTANCES AND CORRECT LIPIDIC EXCHANGE.



# Omega Peptide IPH 5

## ACTIVE SUBSTANCES



### 1. PEPTIDE IPH AG

Regulatory target active peptide IPH AG manifests its qualities in the intestine, significantly improving its function. Peptide improves the quality of intestinal microflora and prevents the formation of pathogenic microorganisms, which generally improves the condition of the intestinal mucosa. It has an important property to activate enterocytes, greatly enhances the absorption of all nutrients, including Omega-5.

### 2. POLYUNSATURATED FATTY ACIDS OMEGA-5

Main component is the pomegranate acid (also known as punicic or trichosanic acid). It is irreplaceable, not produced in the body and must come from nutrition.

Pomegranate is the only common plant product which oil of grains contains about 85% valuable acid. The cold pressed method used to obtain pomegranate oil allows to keep all of its useful properties.

Pomegranate acid has powerful antioxidant activity and strong antichloristic effect.

## EFFECTS AND RESULTS

- antioxidant effects;
- rapid absorption of useful substances;
- antichloristic effect;
- accelerate tissue regeneration and reduction of muscle soreness after physical effort;
- improvement of the skin, hair and nails condition.

## APPLICATION

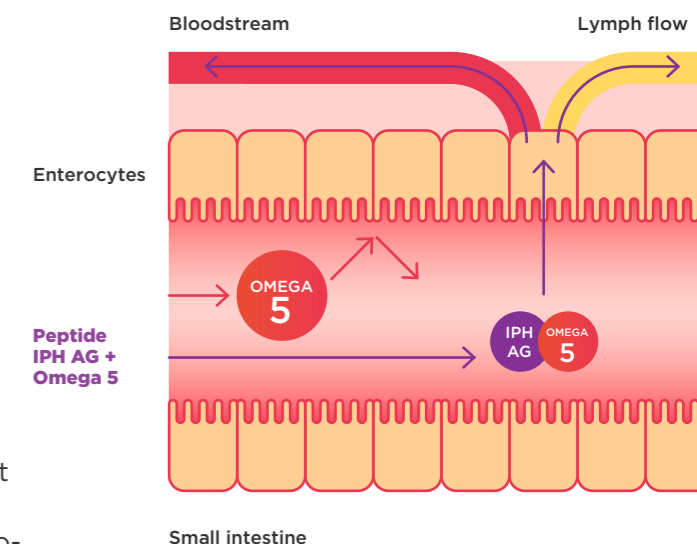
This complex is a recognized treatment and prevention of obesity symptoms, as well as the facilitator for fastest recovery after active sports training.

Capacity of the product to activate the cells of the intestinal mucosa allows it to be successfully used in metabolic disorders and age-related decline intestine.

### INDICATIONS TO USE:

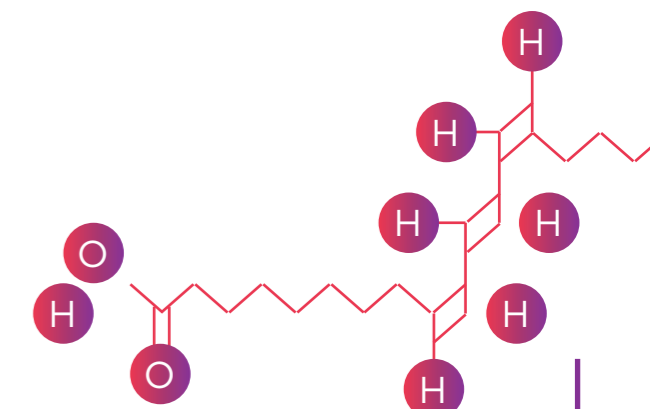
- relief of inflammation (as a plant antiseptic);
- maintaining and improving work of all the organs and systems;
- age-related changes (maintaining a healthy structure of the skin, hair and nails).

## INFLUENCE OF IPH AG PEPTIDE ON THE INTESTINAL WALL AND ABSORPTION OF USEFUL SUBSTANCES FROM FOOD, INCLUDING OMEGA-5 FATTY ACIDS



## CHEMICAL STRUCTURE OF POMEGRANATE ACID (OMEGA-5)

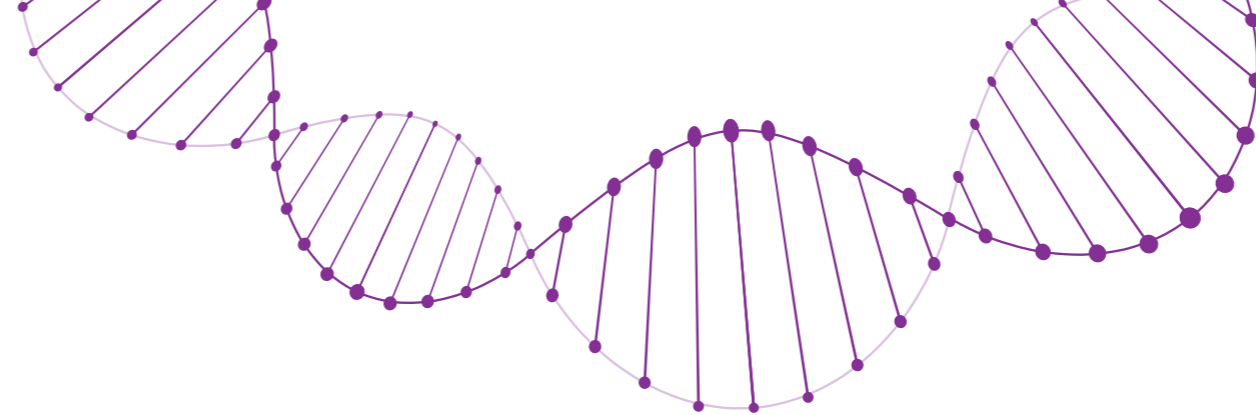
Pomegranate acid has three double bonds and is similar in structure to conjugated linoleic acid (Omega-6), which has two double bonds.



# OMEGA PEPTIDE **IPH 6**

OMEGA  
PEPTIDE  
**IPH 6**

1. THIS COMPLEX INCLUDES THE ACTIVE PEPTIDE IPH AGAA ENRICHED BY POLYUNSATURATED FATTY ACIDS OMEGA-6, OBTAINED FROM THE SAFFLOWER TINCTORIAL SEED OIL (WILD SAFFRON) WHICH CURATIVE PROPERTIES WERE KNOWN SINCE MORE THAN THREE THOUSAND YEARS.
2. PERFECTLY COMPLEMENTING COMPONENTS IMPROVE THE FUNCTIONALITY OF THE MUSCULAR SYSTEM AND STRENGTHEN GENERAL HEALTH.



# Omega Peptide IPH 6

## ACTIVE SUBSTANCES



### 1. PEPTIDE IPH AGAA

Target effect peptide IPH AGAA is essential functional nutrition of athletes. It is quickly absorbed which is essential in the conditions of intensive physical exertion. Its targeted action has an antioxidant effect, preventing damage of muscle cells during exercising; improves metabolism and microcirculation in muscle tissue; has a stimulating effect on the muscles in hypoxia and accelerates their growth.

### 2. POLYUNSATURATED FATTY ACIDS OMEGA-6

The most significant for the body substances in the group of Omega-6 acids are linoleic and arachidonic essential acids. They are not produced in the body and should be regularly taken from nutrition. Their anti-inflammatory, anti-atherosclerotic, healing, sedative, vascular-strengthening and anti-lipid properties ensure the proper functioning of several body systems.

Omega-6 acids activates metabolic processes in the cells, strengthens the skeletal system, accelerates the growth of the muscle tissue, prevents the occurrence of inflammations and destruction of nerve fibers, regulates the synthesis of hormones, enzymes and proteins.

## EFFECTS AND RESULTS

- increase in elasticity of muscles;
- increase of muscle function;
- growth of "dry" muscle mass;
- acceleration of recovery after exercising;
- increase endurance of the body.

## APPLICATION

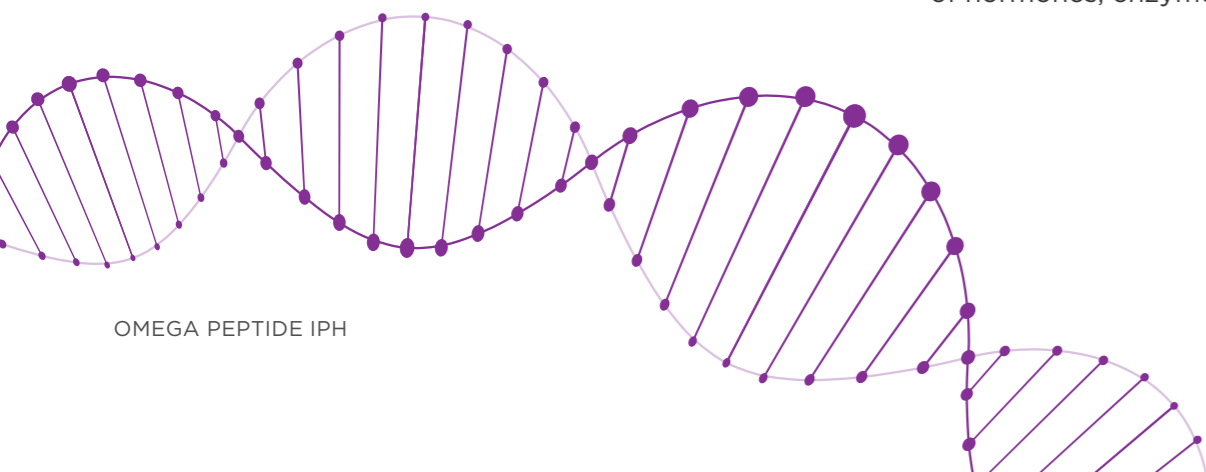
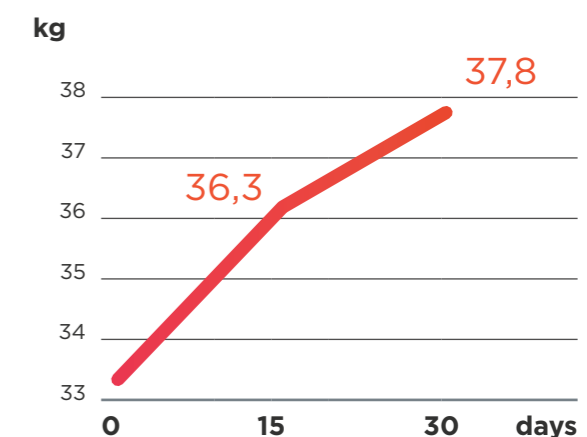
This complex is more effective in intensive workouts to improve athletic performance and regular physical activity to increase endurance.

Can be used to maintain overall health.

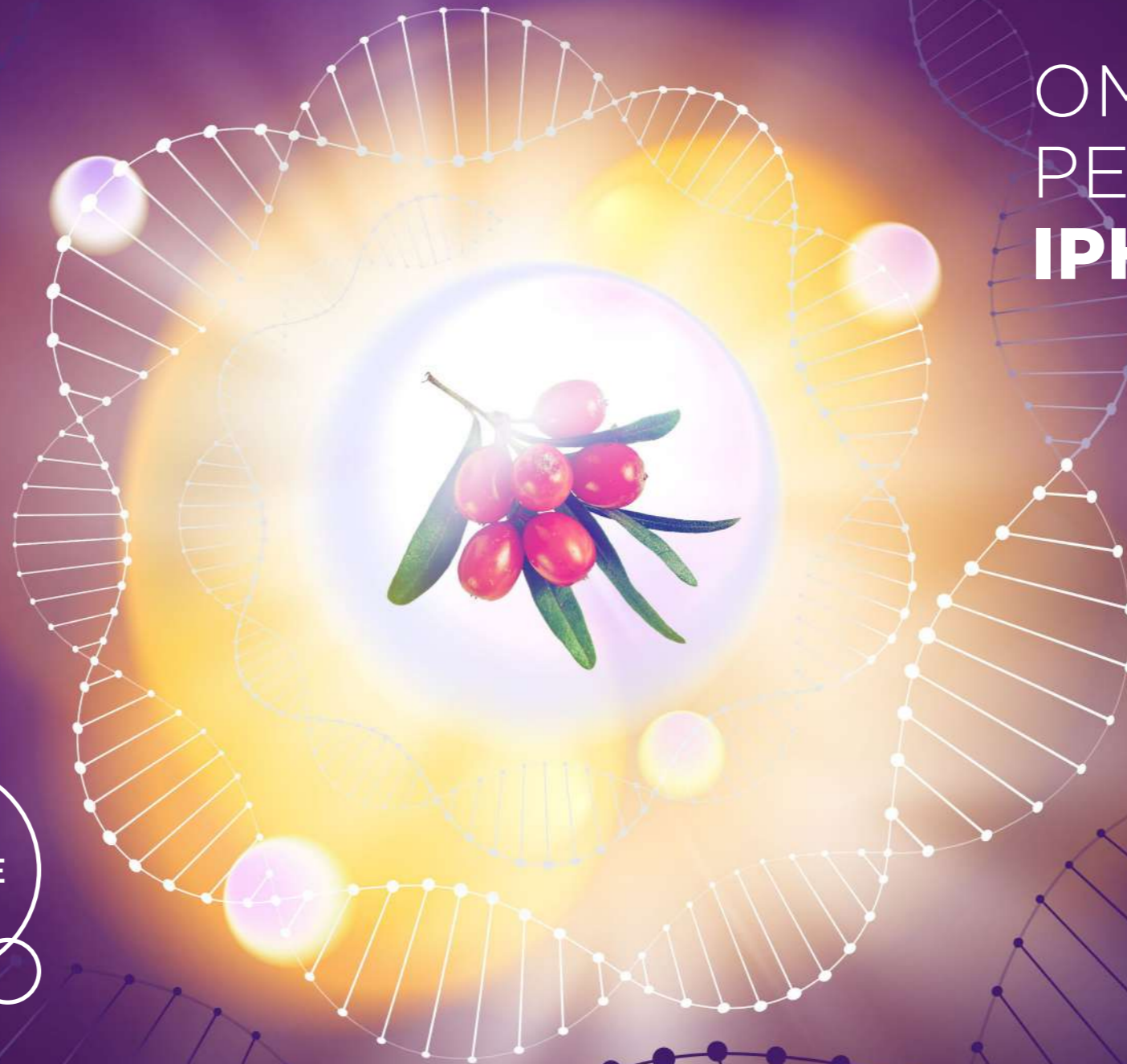
### INDICATIONS TO USE:

- intense exercise;
- weakening of the muscular system in old age;
- sedentary lifestyle;
- obesity (strengthening of the muscular system).

## INFLUENCE OF IPH AGAA PEPTIDE COMPLEX ON GROWTH OF THE "DRY" MUSCLE MASS OF THE BODY

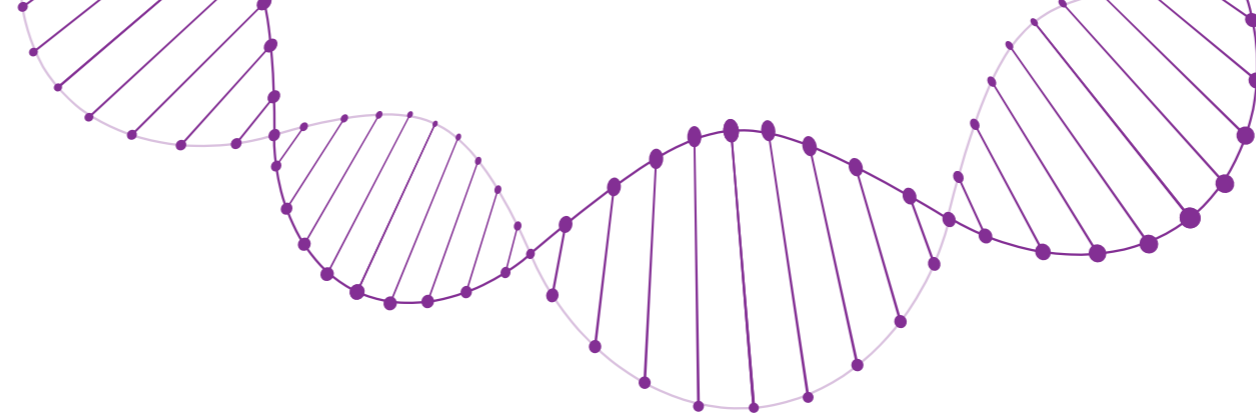


# OMEGA PEPTIDE **IPH 7**



OMEGA  
PEPTIDE  
**IPH 7**

1. UNIQUE COMBINATION OF ACTIVE SHORT PEPTIDE IPH AG AND MONOUNSATURATED FATTY ACIDS OMEGA-7 OBTAINED FROM SEA BUCKTHORN BERRIES OIL.
2. HIGHLY EFFICIENT BIOREGULATOR, WHICH HELPS TO HANDLE OVERWEIGHT PROBLEMS, TO REVITALIZE ENDOCRINE AND CARDIOVASCULAR SYSTEMS.



# Omega Peptide IPH 7

## ACTIVE SUBSTANCES



### 1. PEPTIDE IPH AG

Regulatory target active peptide acts in the intestine, it is improving intestines function and local immunity. The unique property of IPH AG peptide is the capacity to preserve its influence on intestines even during chronic inflammations and hyosecretion of glands, which is especially important during regular sports trainings and also excess weight problems. It has the ability to increase absorbability function by activating the transport systems of enterocytes, which transfer the most important substances in the body, including Omega-7, from the intestine to the blood.

- improve the quality of intestinal microflora;
- activate the body's transport system;
- improve the permeability of the intestinal mucosa;
- enhance the absorption of nutrients from food.

### 2. MONOUNSATURATED FATTY ACIDS OMEGA-7

Sea buckthorn oil is a leader on the content of Omega-7 acids and is known as a powerful anti-inflammatory, antioxidant and promotes the fastest regeneration tissue remedy.

Among Omega-7 the palmitoleic acid, which is considered as natural fatty tissue hormone, is particularly valuable. It has a number of positive effects on the body: maintains the level of triglycerides and high-density lipoproteins, improves body's adaptation to stress conditions, controls appetite and prevents obesity, allows to change the ratio of fat and muscle mass.

## EFFECTS AND RESULTS

- weight normalization
- increase in muscle mass with a decrease in fat mass;
- improvement of metabolism and absorption of useful substances;
- increase immunity and endurance of the body.

## APPLICATION

This complex is of particular interest for actively training athletes, as well as people with

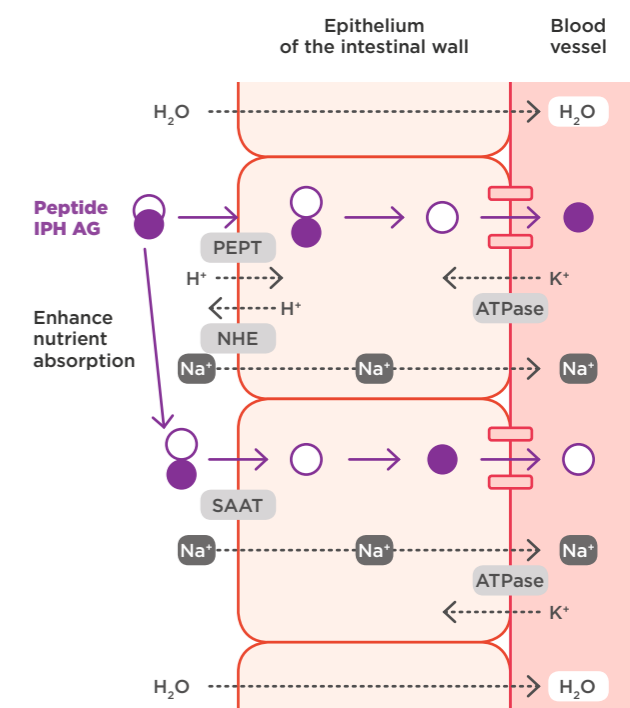
excessive weight. It regulates fat and carbohydrate metabolism, including conditions of elevated mental and physical activity, helps to increase muscles mass.

Helps to avoid nutrient deficiencies and prevents vascular diseases arising due to violation of lipid metabolism.

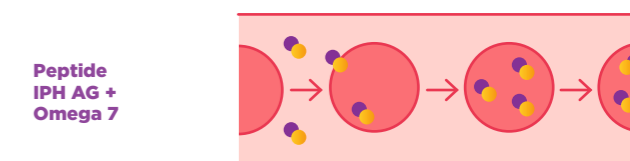
### INDICATIONS TO USE:

- active sports (increasing the ratio of muscle / fat mass);
- overweight and obesity, metabolic syndrome;
- maintaining overall health;
- age-related changes in the structure of the musculoskeletal system.

## INFLUENCE OF IPH AG PEPTIDE ON THE INTESTINES WALL, ABSORPTION OF USEFUL SUBSTANCES FROM FOOD, INCLUDING OMEGA-7 FATTY ACIDS, AND THEIR TRANSPORTATION OF ERYTHROCYTES IN THE BLOOD VESSELS



Intestinal microbiome



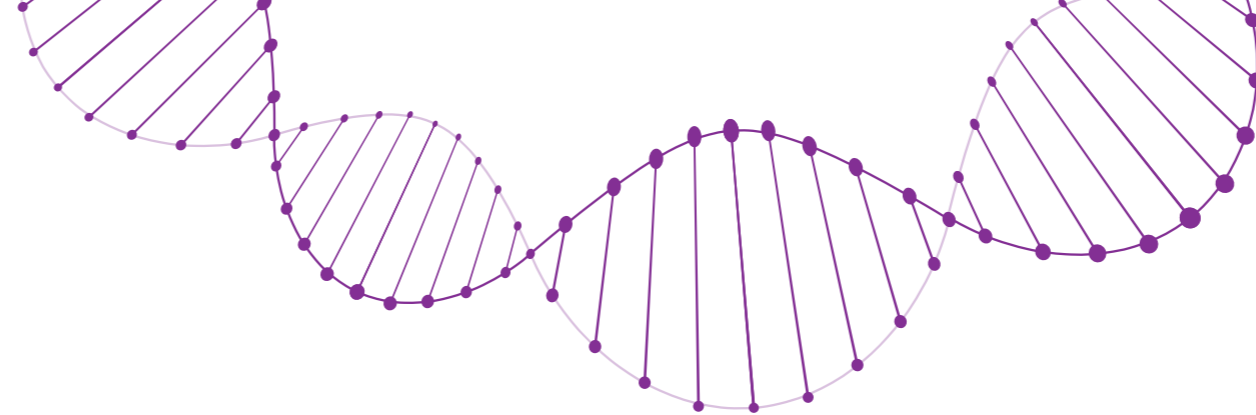
Erythrocytes "take" peptides with omega and transport further along the bloodstream

# OMEGA PEPTIDE **IPH 9**



1. THIS COMPLEX INCLUDES IPH AVN ACTIVE PEPTIDE AND UNSATURATED FATTY ACIDS OF OMEGA-9, OBTAINED FROM OLIVE FRUIT OIL
2. EFFECT OF BOTH COMPONENTS IS TARGETED TO STRENGTHENING OF THE STRUCTURES AND FUNCTIONS OF THE CELLS, IMPROVEMENT OF THE CARDIOVASCULAR SYSTEM FUNCTIONING AND PREVENTION OF ATHEROSCLEROSIS.

OMEGA  
PEPTIDE  
**IPH 9**



# Omega Peptide IPH 9

## ACTIVE SUBSTANCES



### 1. PEPTIDE IPH AVN

The IPH AVN peptide complex is a powerful bioregulator of the cardiovascular system. It helps to restore the walls of the damaged vessels, returning them to normal functioning. These particular properties to strengthen and protect vessels allows to use this peptide as a prophylactic agent to reduce the risk of development of cardiovascular diseases and to increase vascular resistance to intense physical exertion, to slow down the aging processes of the body and to reduce the negative external factors impact of on the health of the vascular system.

Peptide complex enhances the positive effects of omega-9 fatty acids and accelerates their absorption capacity.

### 2. UNSATURATED FATTY ACIDS OMEGA-9

Olive oil is the main ingredient of the Mediterranean cuisine, one of the most beneficial to health. Olive oil is important for healthy nutrition due to its high content of Omega-9.

The leader and the most significant substance of this group of acids is oleic acid, which is directly involved in many processes of the body. Its main properties are optimization of work of the cell membranes, prevention of cholesterol plaques formation on the walls of the blood vessels, anti-inflammatory action, and control of carbohydrate, protein and lipid metabolisms.

## EFFECTS AND RESULTS

- strengthen the cardiovascular system;
- normalization of carbohydrate, protein and fat metabolism;
- prevention of the cholesterol plaques formation;
- improvement of the body's energy supply.

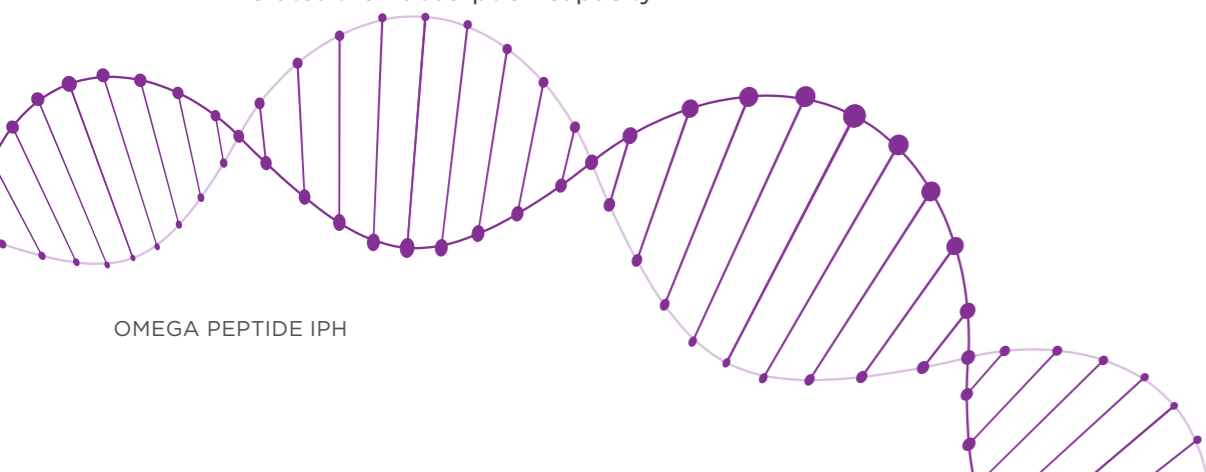
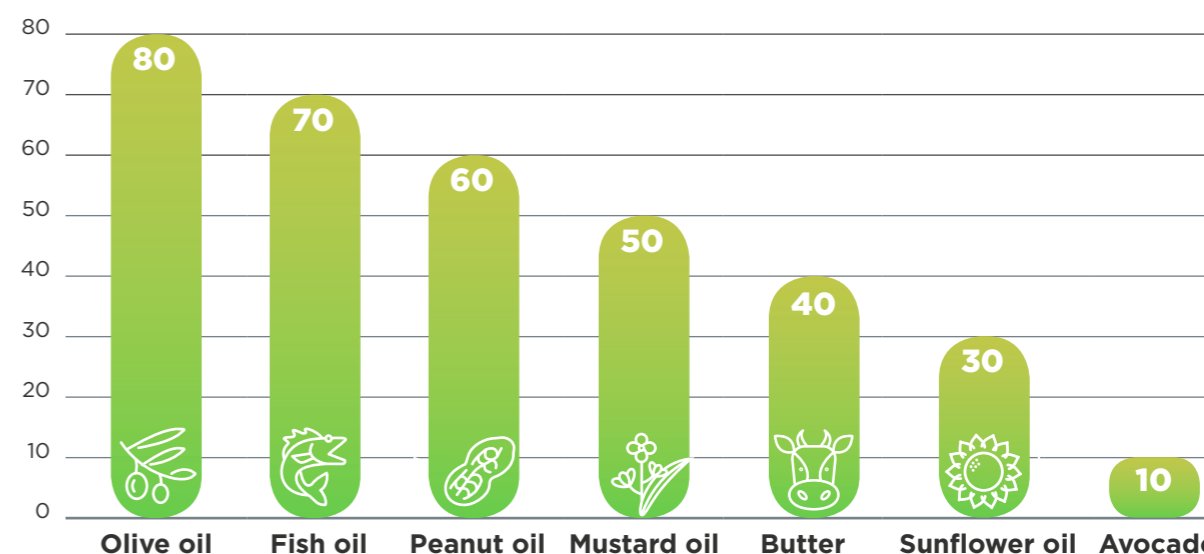
## APPLICATION

This complex will be applicable in the presence of the cardiovascular system diseases, intensive sports exercises and also as prophylactic treatment of cardiovascular problems and for maintenance general health.

## MAIN INDICATIONS:

- diseases of the cardiovascular system;
- physical or emotional stress;
- overweight and obesity;
- middle and old age (strengthening cardiovascular systems);
- sedentary lifestyle.

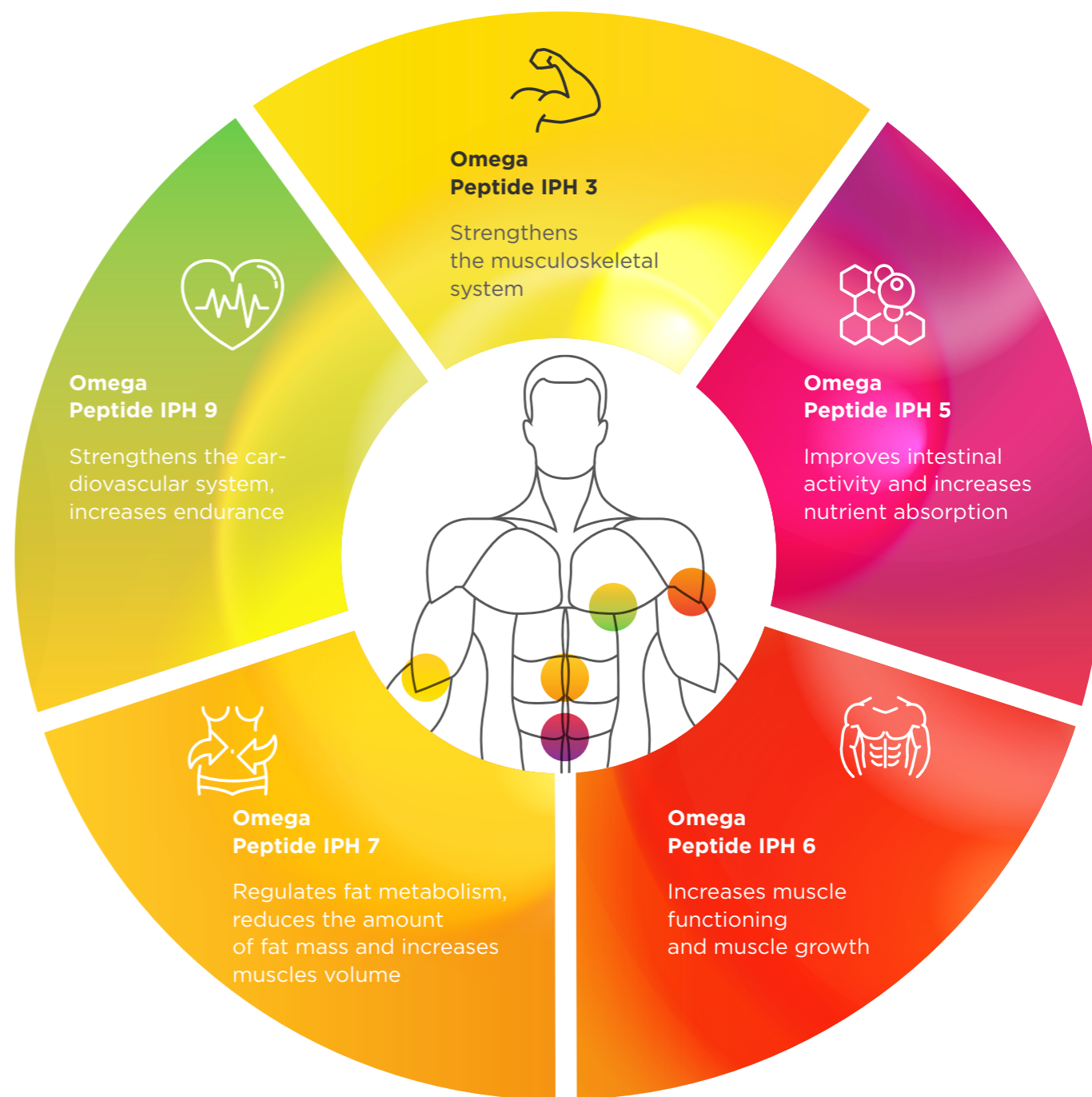
## CONTENT OF OMEGA-9 IN THE PRODUCTS OF VEGETABLE AND ANIMAL ORIGIN IN G (BY 100 G):



# Conclusions

1. Omega-Peptide Complexes from Ideal Pharma Peptide are innovative products on the nutraceutical market. Due to verified formulas and carefully selected components of plant origin complexes perform safely, quickly and purposefully, ensuring positive effects for both groups of intensively trained athletes and all who wish to maintain health and active longevity.
2. The uniqueness of the Omega-Peptide Complexes lies in the perfectly complementary components — peptides and unsaturated fatty acids. Peptides do not only improve the functionality of the cells and body systems, but also significantly enhance the positive effects of acids.
3. Peptides in the Omega-Peptide Complexes accelerate the process of assimilation of unsaturated omega-fatty acids and other nutrients derived from food, which is very important for athletes in conditions of intensive training.
4. Unsaturated fatty acids are not usually produced by the body, therefore should regularly come with nutrition in sufficient quantities. Omega-Peptide Complexes allows to easily fill the gap and provide maximum targeted benefits.
5. Omega Peptide Complexes from Ideal Pharma Peptide are a convenient, fast and effective way to improve athletic performance, restore health and maintain activity.
6. Use of Omega-Peptide Complexes will allow you to remain vigorous and full of energy for a long time!

## ZONES OF ACTIVE EXPOSURE OF IPH PEPTIDE COMPLEXES WITH OMEGA





OMEGA  
PEPTIDE  
iP.3

OMEGA  
PEPTIDE  
iP.5

OMEGA  
PEPTIDE  
iP.6

OMEGA  
PEPTIDE  
iP.7

OMEGA  
PEPTIDE  
iP.9

## CONTACTS

### GERMANY

+ 49 617 285 06838

Ferdinandstr. 11 Bad Homburg

sale@ideal-pharma-peptide.com

www.ideal-pharma.de

### RUSSIA

+7 800 777 3828

1-й Тружеников переулок 17, Москва

sale@ideal-pharma-peptide.com

www.ideal-pharma.ru

### CHINA

+ 86 155 021 03091

116 Shimen Yi Street, Jingan Area, Shanghai

sale@ideal-pharma-peptide.com

www.ideal-pharma.cn

### USA

+1 908 727 8080

145 Wyckoff Road, Suite 106 Eatontown, NJ

sale@ideal-pharma-peptide.com

www.ideal-pharma.us